

MODULAR

APOTHECARY COLLECTION

Herbalist Naturalist



APOTHECARY COLLECTION

Herbalist Naturalist



INSPIRATION

The Apothecary Collection brings a holistic approach to design that focuses on bringing aspects of the natural world indoors. Naturalist is a textured woven latticework pattern with an abundance of depth and movement. Its organic patterning with natural, clean, earthy tones brings refreshing natural elements into the built environment. Herbalist is a large-scale abstract botanical with soft, opaque washes that mimic watercolor. The Apothecary Collection is available in 24" x 24" tile and was designed to flawlessly coordinate with our Modern Repose Collection. Its organic patterning and calm, refreshing hues will foster the human- environmental interaction while elevating the design and functionality of interior spaces.

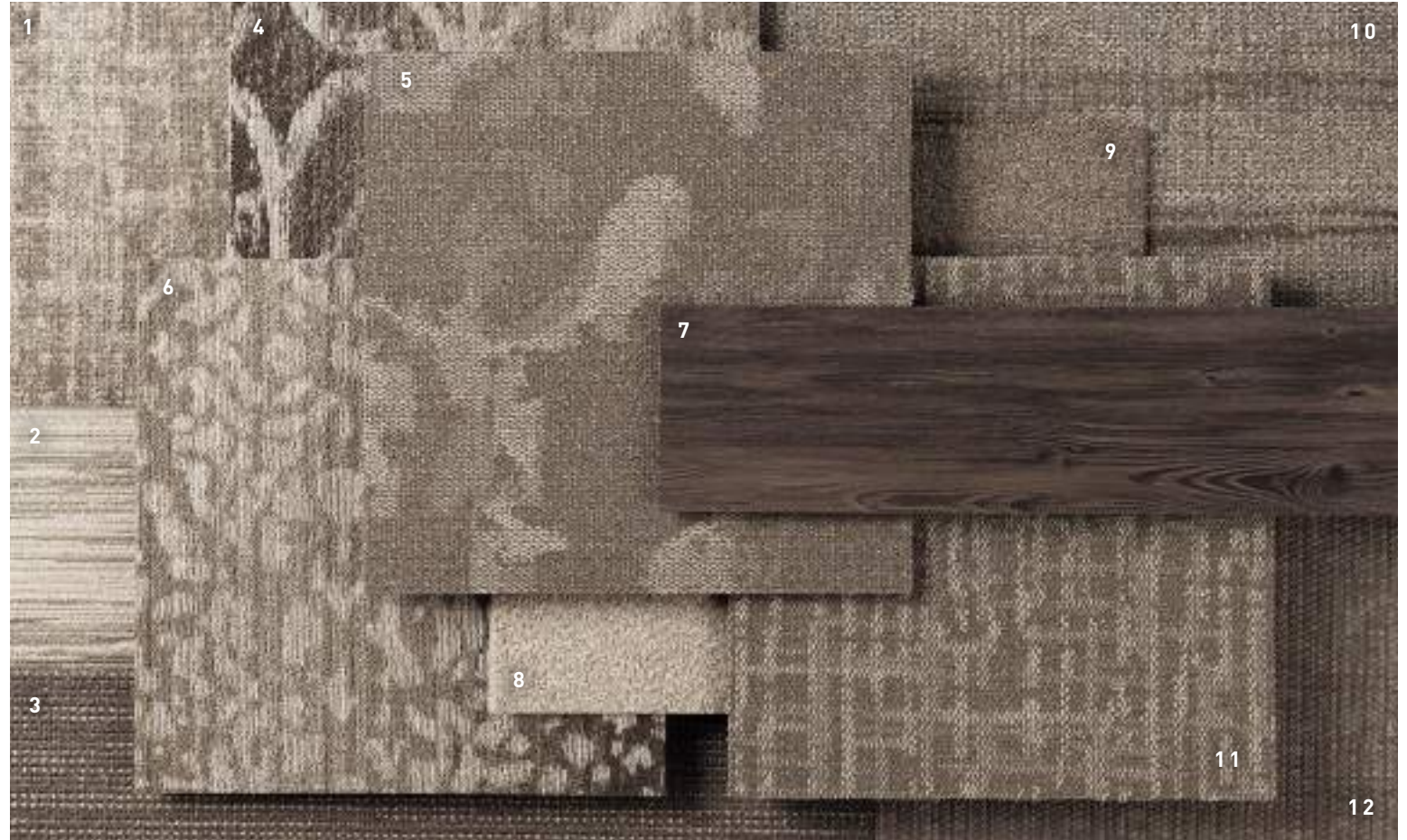


[cover] HERBALIST // NATURALIST // SKY // monolithic
[above] NATURALIST // SKY // ashlar









Beyond the beauty of individual products, our flooring coordinates effortlessly across all of our product platforms - modular carpet tile, broadloom, LVT and Kinetex textile composite flooring. This offering enables you to blend a range of designs with tonal simplicity to create palettes that reflect the demands of each unique space.

- 1. FRACTURED PLAID // 7587 // 2874 Mills // Modular

- 2. STRIA // 7585 // 2742 Pima // Modular

- 3. BOUCLÉ // 7081 & 3081 // 2706 Strand // Modular and Broadloom

- 4. TRANQUIL // 7593 & 6593 // 3236 Sandstone // Modular and Broadloom

- 5. HERBALIST // 7571 // 3236 Sandstone // Modular

- 6. SERENE // 7592 & 6592 // 3236 Sandstone // Modular and Broadloom

- 7. TIMELESS // V5011 // 1009 Heritage // LVT

- 8. VILLA // N9129 // 2901 Fog // Broadloom

- 9. FAIRWAY II // N117 & N9117 // 9945 Glen Abbey // Modular and Broadloom

- 10. ORGANIC RAKU // 7062 // 2344 Silica // Modular

- 11. NATURALIST // 7572 // 3236 Sandstone // Modular

- 12. PROVISION // 1831 // 2277 Procurement // Kinetex

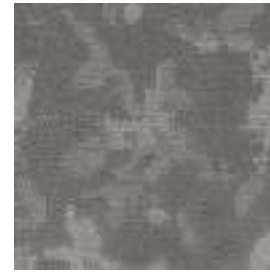


Herbalist

24"x24" MODULAR



COLOR 3228
sky



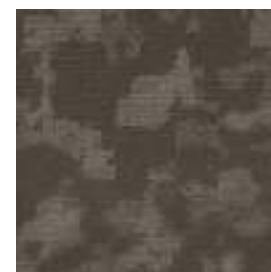
COLOR 3229
soft grey



COLOR 3230
pine



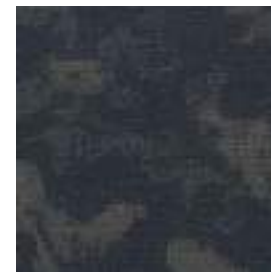
COLOR 3231
teal



COLOR 3232
coffee



COLOR 3233
terra



COLOR 3234
sailor



COLOR 3235
meadowlark



COLOR 3236
sandstone



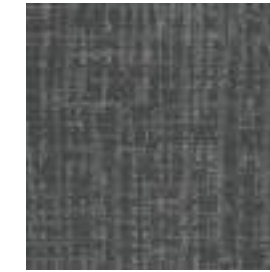
COLOR 3237
smoke

HERBALIST // TEAL // brick

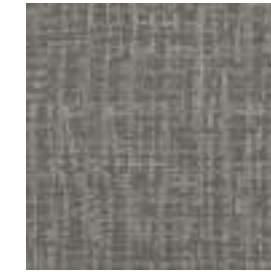


Naturalist

24"x24" MODULAR



COLOR 3228
sky



COLOR 3229
soft grey



COLOR 3230
pine



COLOR 3231
teal



COLOR 3232
coffee



COLOR 3233
terra



COLOR 3234
sailor



COLOR 3235
meadowlark



COLOR 3236
sandstone



COLOR 3237
smoke

NATURALIST // TEAL // brick
[back cover] NATURALIST // SKY // ashlar

FIBER

Encore® SD Ultima® (with recycled content)
Encore SD Ultima is specifically engineered to maximize appearance retention with exceptional color, performance, sustainability and practicality.

BACKINGS

Nexus® Modular products can be installed in a variety of ways and are performance engineered to be visually appealing. In addition, they are designed to accommodate your long-term flooring budget.

- » Manufactured in an ISO 14001 certified facility
- » Contains pre-consumer recycled content and contributes to LEED
- » Recyclable through the J+J Flooring's R4 Carpet Reclamation Program

ADHESIVE

Commercialon® Premium Modular Adhesive
A high strength acrylic latex-based carpet adhesive specifically formulated for bonding modular PVC backed carpet to the floor. This premium adhesive is for use with all Nexus Modular Tile products. This adhesive is guaranteed for the life of the installation when used in accordance with the J+J Flooring Carpet Installation Handbook. Commercialon Premium Modular Adhesive meets the CRI Low-VOC Emission Criteria, CRI ID# PSA-425402. Commercialon Premium Modular Adhesive is non toxic, has ultra-low odor and is antimicrobial in the dry state.

OPTIONAL:
TileTabs - High Tack Adhesive Tabs (modular only)

TECHNOLOGIES

ProTex® Anti-Soil Treatment
ProTex is a proprietary anti-soil treatment technology that is applied and bonded to the pile fiber to impede soiling and to improve cleanability. It is standard on all J+J Flooring products.

OPTIONAL:
Sentir® Advanced Odor-Blocking Technology
Please visit jjflooring.com/technical/ technologies for more information.

ProSept®
ProSept®, a safe broad-spectrum antimicrobial treatment that protects the carpet from bacterial and fungal growth.

MOISTURE

Are high levels of moisture in your concrete slab causing issues with your project's floor covering? We can help.

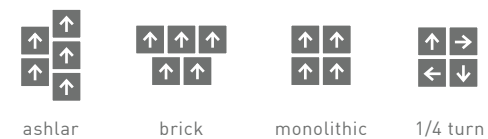
- » Nexus® Modular Carpet with TileTabs – 99% RH
- » Cost-efficient
- » Long-term performance
- » Straightforward, easy-to-understand Lifetime warranty
- » Requires no special floor preparation

STRAIGHT-FORWARD WARRANTIES

Warranty: Installed with TileTabs	Warranty: Installed with Commercialon® Premium Adhesive (non-prorated)	Warranty: Installed with any other adhesive	Max RH, pH: Installed without Commercialon® Premium Sealer	Max RH, pH: Installed with Commercialon® Premium Sealer
Lifetime	Lifetime	1 Year	90% RH, pH 9	99% RH, pH 11 (Tiletabs) 97% RH, pH 11 (Commercialon® Adhesive)

STYLE	herbalist 7571 modular	naturalist 7572 modular
CONSTRUCTION	patterned loop	patterned loop
FIBER TYPE	100% Encore® SD Ultima® Nylon	100% Encore® SD Ultima® Nylon
DYE METHOD	solution dyed	solution dyed
OUNCE WEIGHT	19.0 oz./sy(644 grams/m²)	19.0 oz./sy(644 grams/m²)
GAUGE	1/12 (4.72 rows/cm)	1/12 (4.72 rows/cm)
BACKING	Nexus® modular	Nexus® modular
SIZE	24" x 24" (61.0 cm x 61.0 cm)	24" x 24" (61.0 cm x 61.0 cm)
PATTERN REPEAT	n/a	n/a
TOTAL THICKNESS (nominal average)	0.25 inches (0.635 cm)	0.25 inches (0.635 cm)
SPECIAL TECHNOLOGY	ProTex® anti-soil treatment	ProTex® anti-soil treatment
OPTIONAL SPECIAL TECHNOLOGIES	Sentir® advanced odor blocking treatment ProSept® antimicrobial	Sentir® advanced odor blocking treatment ProSept® antimicrobial
PHYSICAL TESTING	flooring radiant panel (class 1) pill test – (passes) smoke density (less than 450 flaming) static generation (less than 3.5 kv) ADA compliance (compliant for accessible routes)	flooring radiant panel (class 1) pill test – (passes) smoke density (less than 450 flaming) static generation (less than 3.5 kv) ADA compliance (compliant for accessible routes)
WARRANTIES	lifetime fiber performance for wear lifetime fiber performance for static lifetime stain removal lifetime colorfastness to light and atmospheric contaminants lifetime for tuft bind strength (edge ravel, yarn pulls, zippering) lifetime against delamination lifetime dimensional stability	lifetime fiber performance for wear lifetime fiber performance for static lifetime stain removal lifetime colorfastness to light and atmospheric contaminants lifetime for tuft bind strength (edge ravel, yarn pulls, zippering) lifetime against delamination lifetime dimensional stability

MODULAR INSTALLATION METHODS



©2021 J+J Flooring Group, LLC - This unique design is protected under the U.S. Copyright Act of 1976. Any unauthorized copying or duplication of this design constitutes copyright infringement in violation of federal law. Due to the unique visual characteristics of modular carpets, pattern repeats and pattern run-off seams may appear more noticeable than in broadloom carpets. Such visual characteristics do not constitute a manufacturing defect, and as such, should be considered when selecting modular carpet and its installation.

These photographs are representations of the installation for this modular product. Your modular installation may look different than these photos depending upon individual tile placement, lighting, and overall space layout, including furnishings. Final tile placement and the resulting visual is thus the customer's, and not J+J Flooring's responsibility.



P.O. BOX 2207
DALTON, GA 30722
P 800 241 4586
JJFLOORING.COM
AX2221M04